



homeward trust
edmonton

Dashboard Indicators

Feb 2017

Highlights for Feb 2017

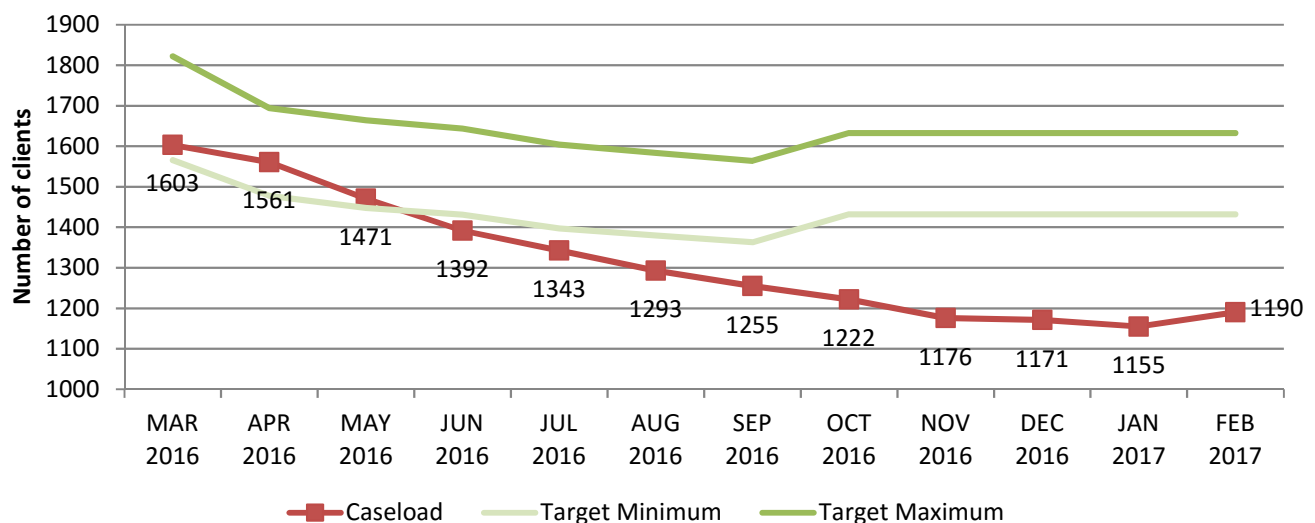
- Over 6,000 people housed since 2009
- Housings trending upwards, approaching targets
- Caseload still below target thresholds, but has increased this month for the first time in nearly a year. This could be due to increased housings and a noticable drop in exits, although it is too early to comment on any changes in trends.

Number of People Housed Since April 1, 2009

ICM, RRH, PSH, ACT, Youth CTI

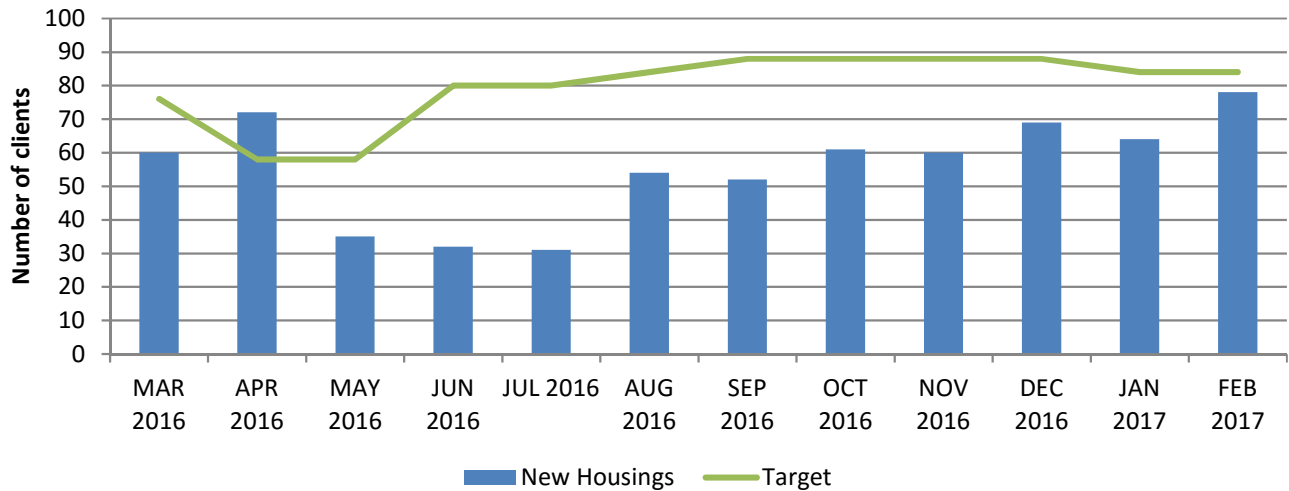
6062 Total
4250 Clients
1812 Dependents

Caseload



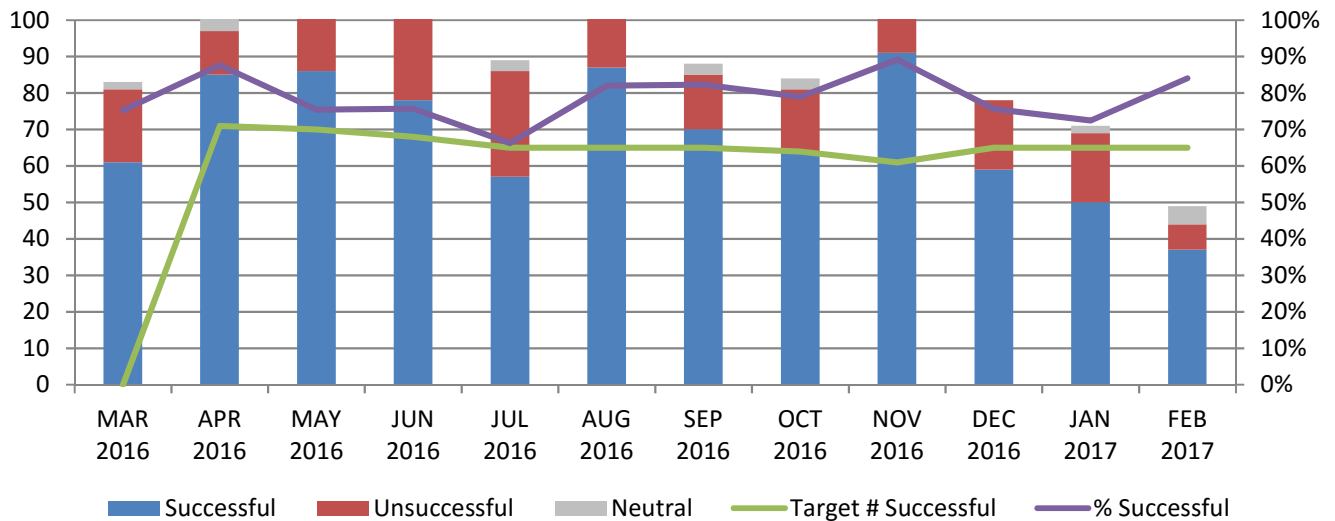
- Caseload remains below target minimum, but appears to be rising this month. This may be due to an increase in housings and decrease in exits. Too early to comment on any change in trends.

New Clients Housed



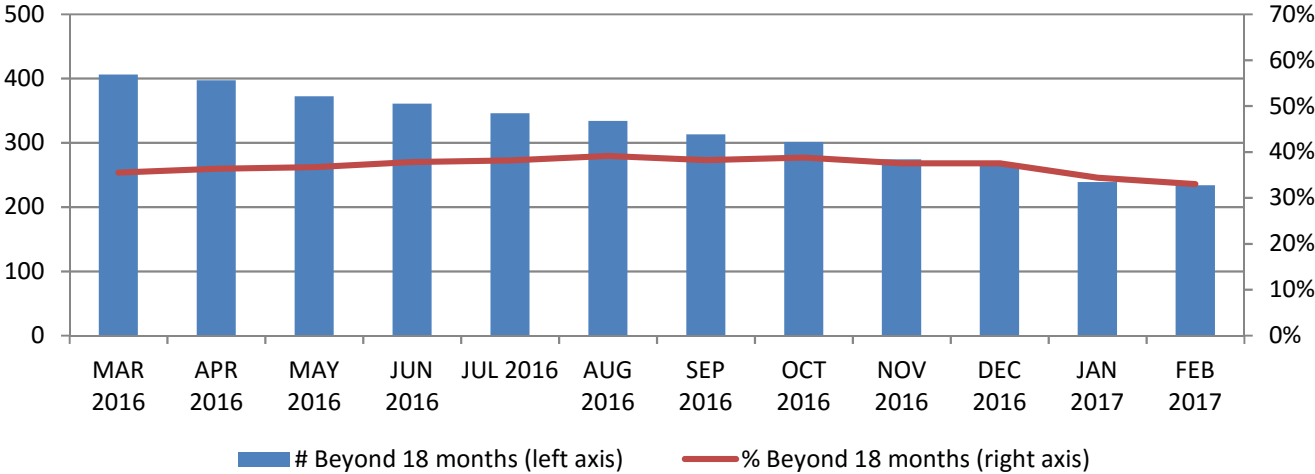
- Housings remain below target, but appear to be rising in this month.

Clients Achieving Independence

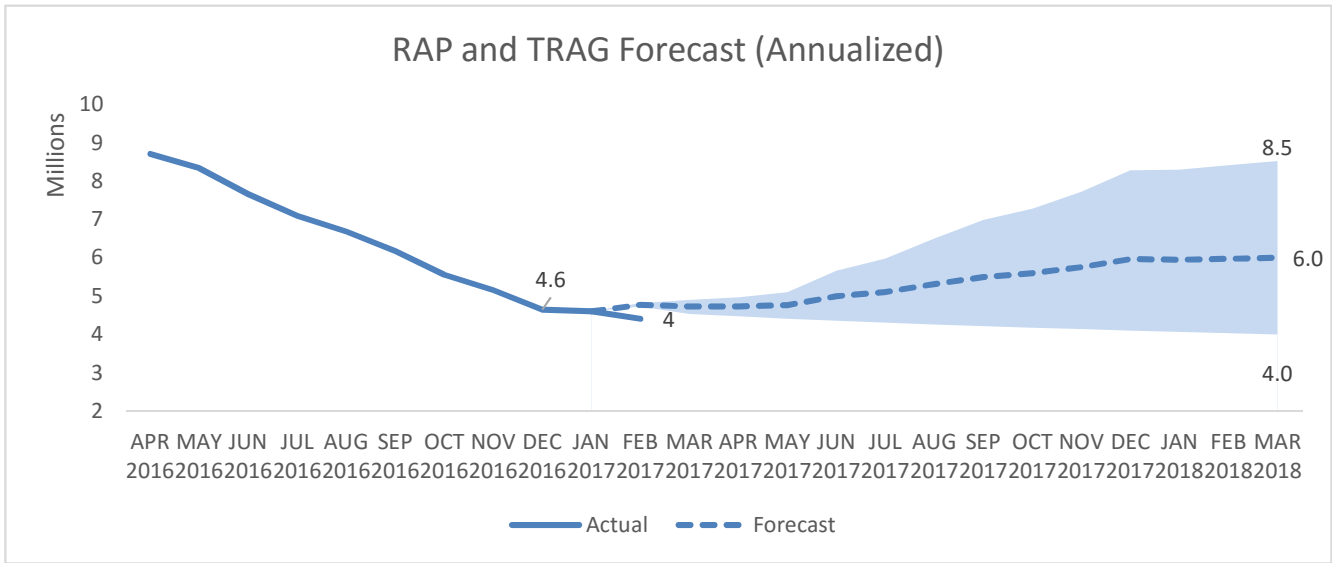


- Significantly fewer exits this month; lowest total number of exits this contract year, and totals below target levels.

Long-Term Clients (ICM only)



Rent Supplements (Annualized)



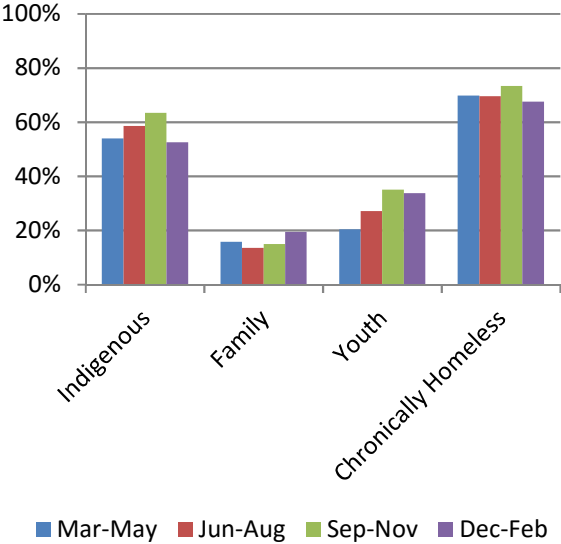
- Trend in numbers of clients receiving rental assistance relatively unchanged.
- Figures include both RAP (current clients) and TRAG (temporary support for former clients). Covers all cheques issued, including those which were eventually cancelled.
- Both number of households receiving supplements as well as the average supplement per household have been consistently decreasing since the beginning of the contract year.

New Clients

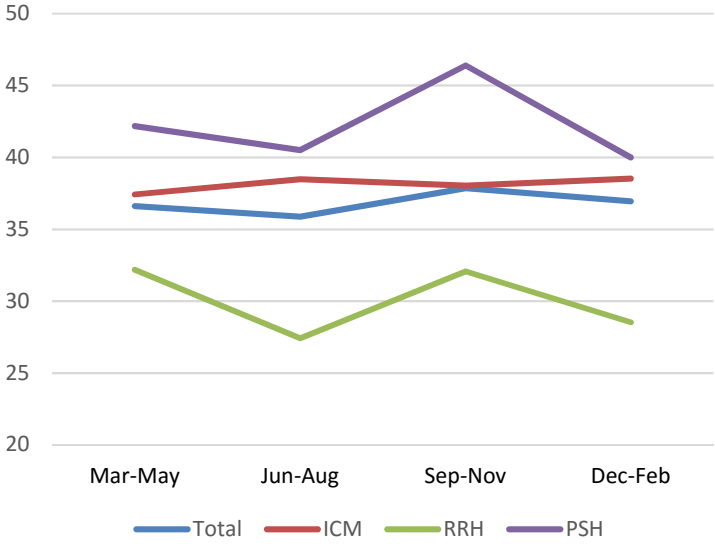
Priority Populations

Average SPDAT Score

Priority Populations - New Clients

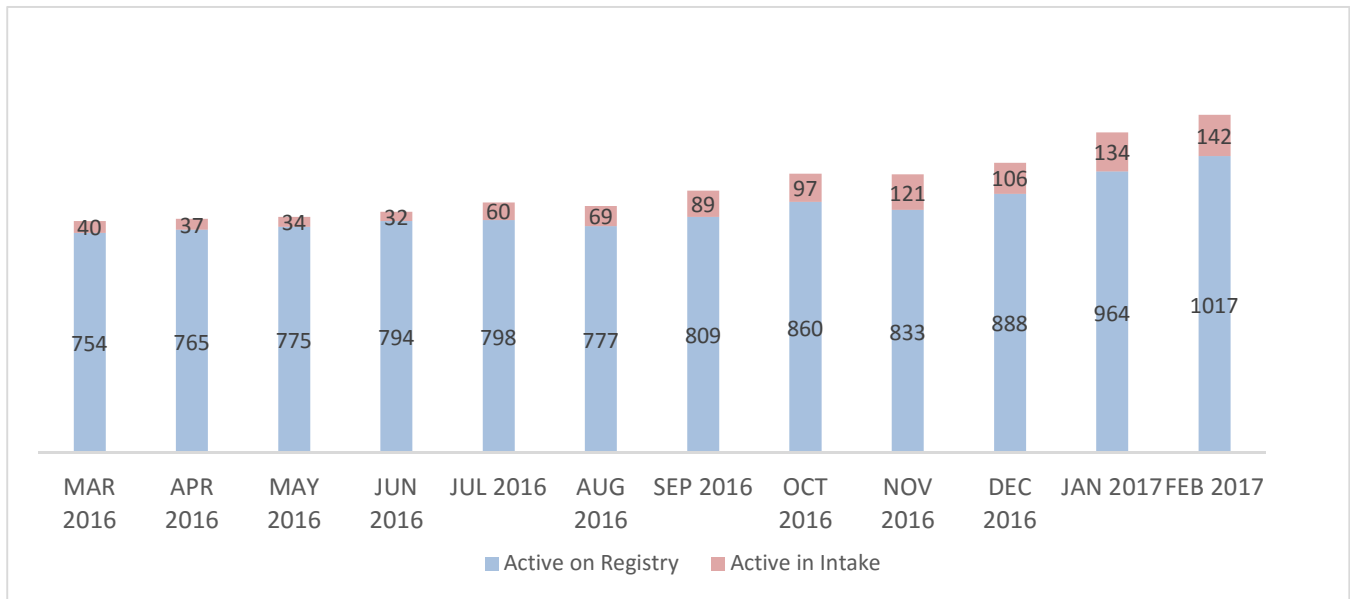


Average SPDAT Score - New Clients

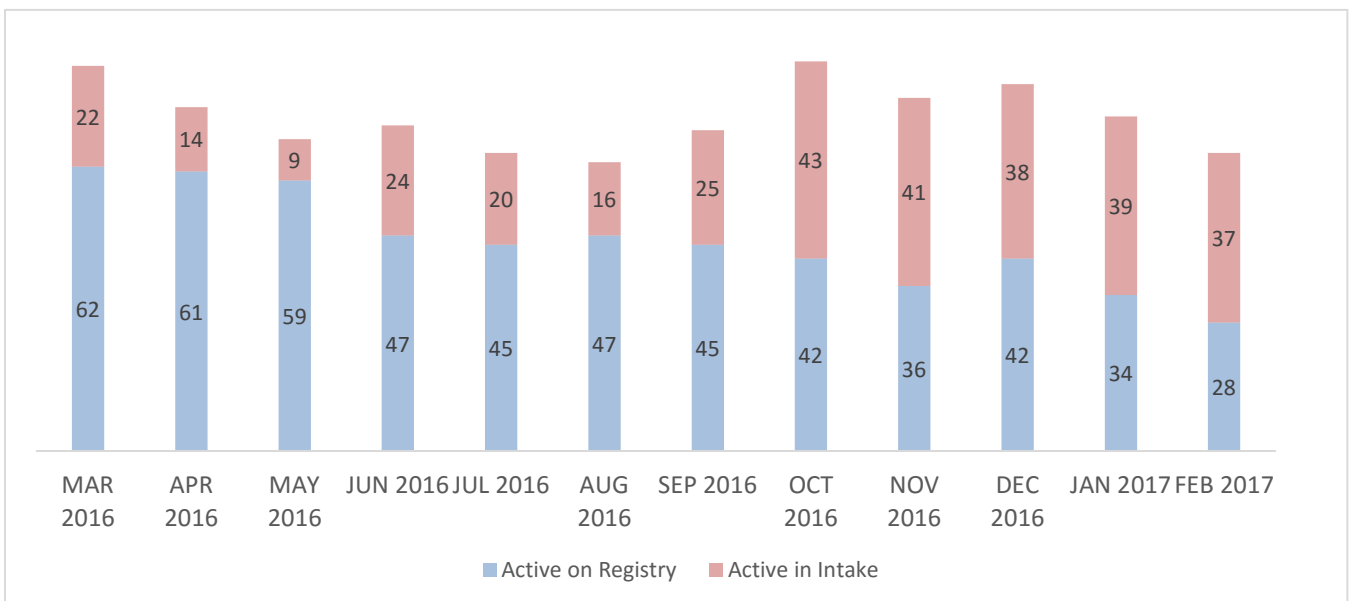


- Over half of new clients are Indigenous
- Over three quarters of clients housed in the last three months are chronically homeless

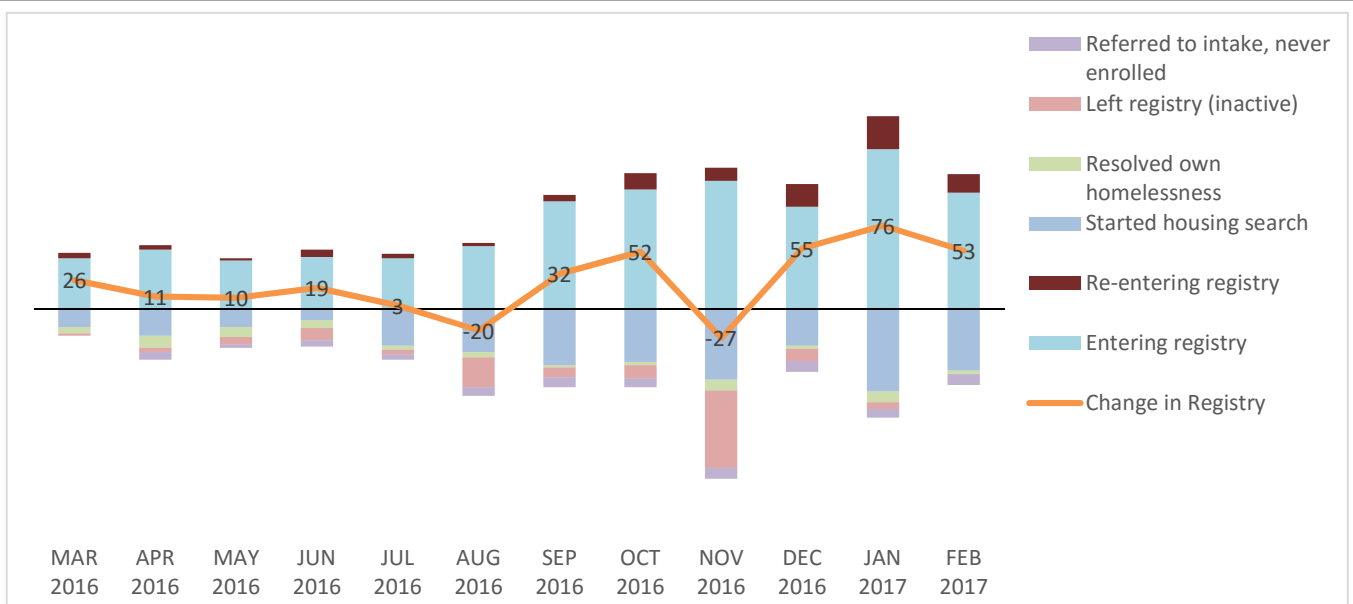
Coordinated Access - Singles



Coordinated Access - Families



Coordinated Access - Singles



Coordinated Access - Families

